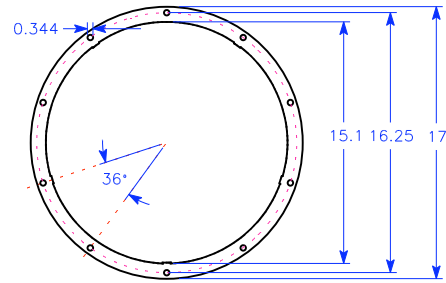


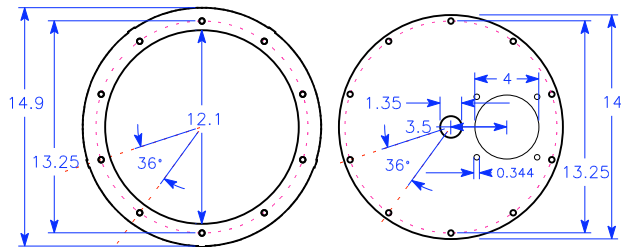
GEK v3.5 Flange Rings and End Plates

(Cut from 1/8" mild steel sheet)

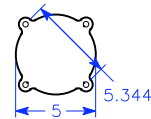
Gas Cowling



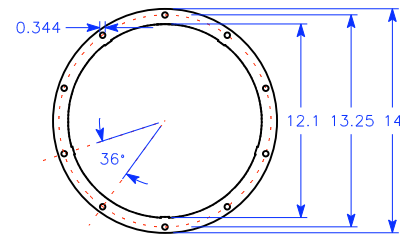
Top Rim Flange



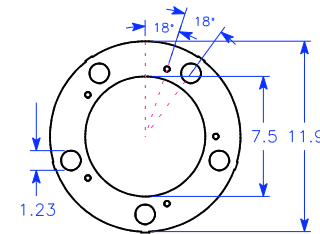
Bottom End Plate
(with grate rotation and
ash port hole)



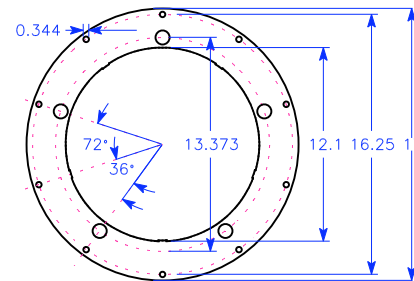
Downdraft Reactor



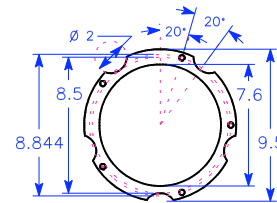
Top Rim Flange



Bottom End Plate

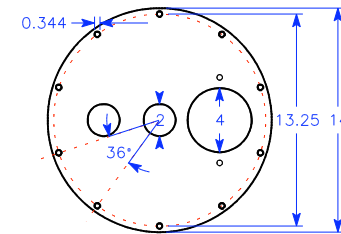


Perimeter
Mounting Flange

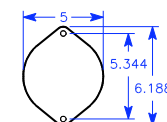


Reduction Bell
Base Flange

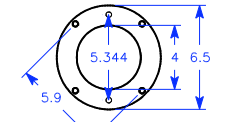
Hopper, Cyclone, Burner, Grate



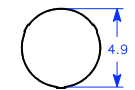
Reactor or
Hopper Lid



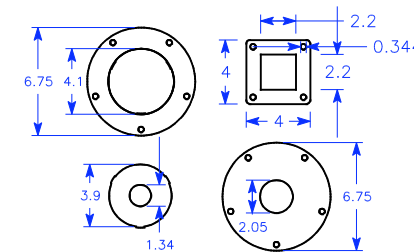
Puff Lid



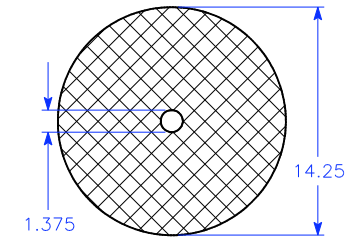
Puff Lid Base



Swirl Burner Base



Cyclone Top, Base
Tube Insert & Mount



Grate
(3/16" hole perf,
1/8" thick)

Before building, check for more recent versions at: www.gekgasifier.com
 ALL Power Labs 1010 Murray Street Berkeley, CA 94710. 3/09. jim@allpowerlabs.org
 This design and drawing released under the intentions of the Creative Commons Attribution
 Noncommercial- Share Alike License. For more info on use rights and responsibilities see:
<http://www.gekgasifier.com/wood-gasifier-plans/gek-licensing/>