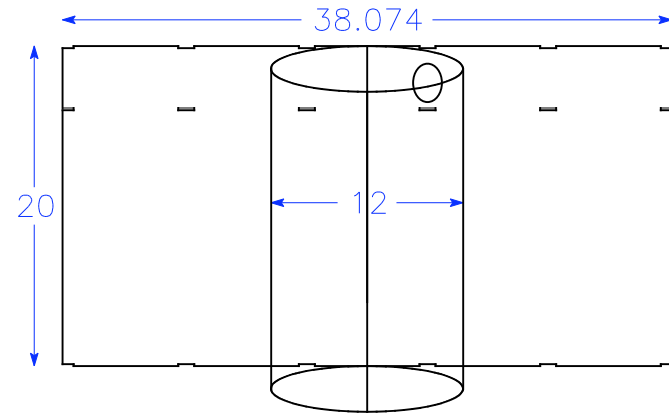
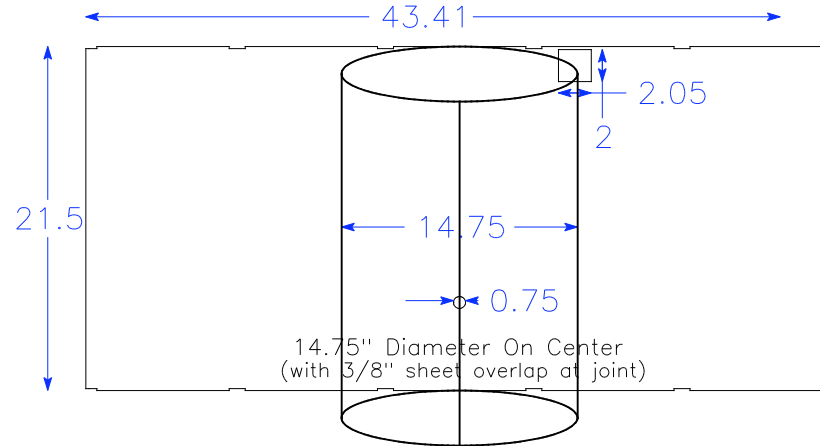


# GEK Vessel Tubes v2.0: rolled from flat sheet

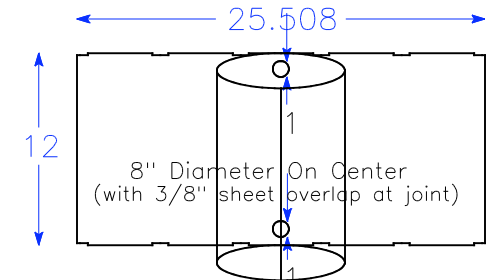
(Cut from 1/16" thick mild steel sheet)



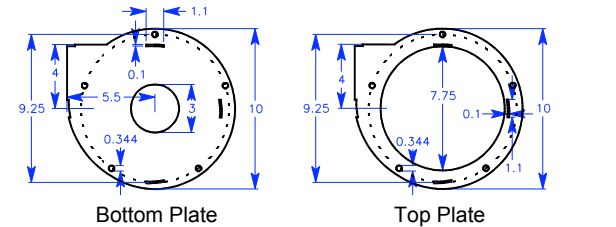
**Downdraft Reactor Outside**



**Gas Cowling**

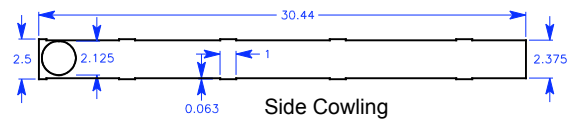


**Packed Bed Filter**

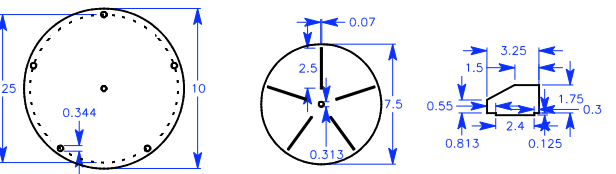


**Bottom Plate**

**Top Plate**



**Side Cowling**



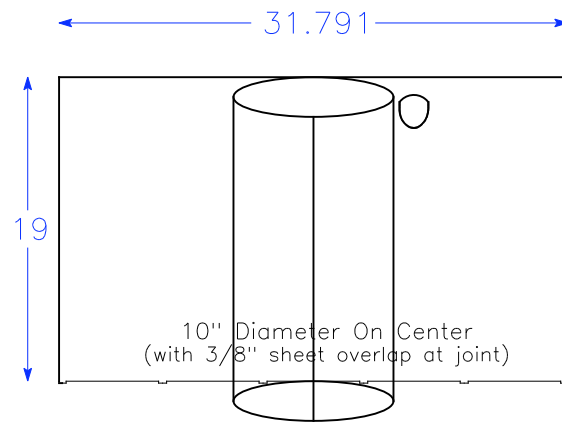
**Motor Backing Plate**

**Rotor**

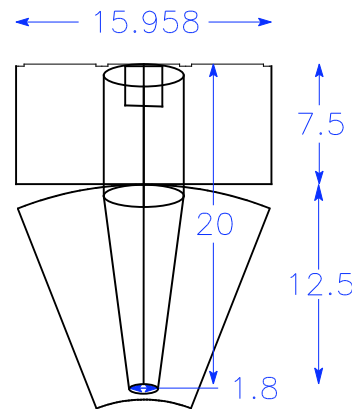
**Fan Blade x 5**

**Centrifugal Vac/Blower**

all pieces 16awg mild steel  
except rotor plate, 11awg

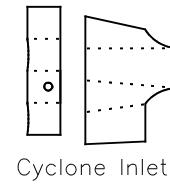


**Downdraft Reactor Inside/Insulation**

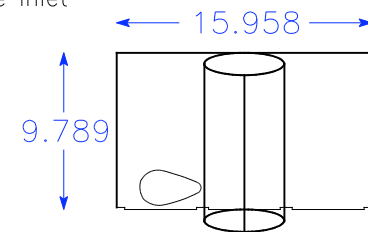


**5" Dia cyl, Taper to 1.8"**  
(with 1/4" sheet overlap)

**Cyclone**



**Cyclone Inlet**



**5" Diameter On Center**  
(with 1/4" sheet overlap at joint)

**Swirl Burner**

Before building, check for more recent versions at: [www.allpowerlabs.org/gasification/gek](http://www.allpowerlabs.org/gasification/gek)  
ALL Power Labs 1010 Murray Street Berkeley, CA 94710. 3/09. jim@allpowerlabs.org